

# Amarr® Stratford® Classic Steel Traditional Garage Doors



Short Panel design in Golden Oak

**Time-honored style.** The Amarr Stratford collection offers four traditional designs, 11 color choices, and 21 decorative window options. This durable low-maintenance collection provides section interfaces designed to reduce serious finger and hand injuries. The Amarr Stratford collection. A statement of style.

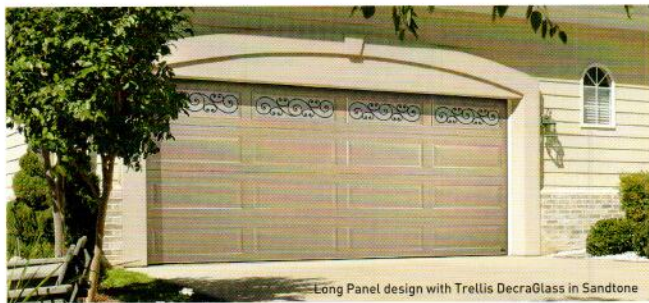
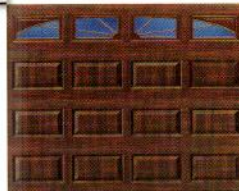
Short Panel with Mission DecraGlass (SP71)



Long Panel with Cascade DecraTrim (LP23)

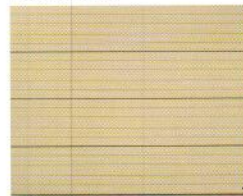


Short Panel with Sunray DecraTrim (SP27)

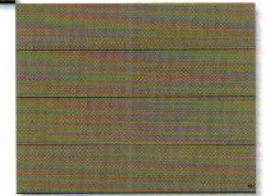


Long Panel design with Trellis DecraGlass in Sandtone

Ribbed Panel (RP)

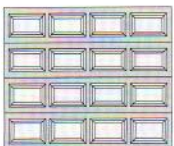


Flush Panel (FP)

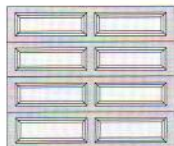


## PANEL DESIGNS

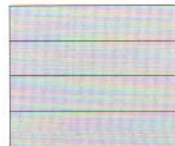
SP • SHORT PANEL



LP • LONG PANEL



FP • FLUSH PANEL\*



RP • RIBBED PANEL\*



\*Available in Amarr Stratford ST3000 only

# Amarr® Stratford

## Construction



### STEEL ST1000

#### Single-Layer: Steel

Get value and durability with an Amarr Stratford ST1000 single-layer steel door. These heavy-duty steel doors are durable, reliable, and low maintenance.

- Heavy-duty Exterior Steel
- Durable, Reliable, Low Maintenance



### ST2000

#### Double-Layer: Steel + Insulation

An Amarr Stratford ST2000 double-layer door provides durable, low maintenance features, plus a layer of vinyl-coated insulation for increased thermal properties and quieter operation.

- Heavy-duty Exterior Steel
- Durable, Reliable, Low Maintenance
- Environmentally Safe Polystyrene Thermal Insulation with Vinyl Backing
- Energy Efficient
- Quiet Operation



### ST3000

#### Triple-Layer: Steel + Insulation + Steel

For the toughest, most energy-efficient steel door, an Amarr Stratford ST3000 triple-layer door includes the ultimate in thermal properties, plus a layer of steel for a finished interior look and added durability.

- Heavy-duty Exterior and Interior Steel
- Durable, Reliable, Low Maintenance
- Environmentally Safe Polystyrene Thermal Insulation
- Superior Energy Efficiency
- Extra Quiet Operation

## Specifications



### PANEL DESIGNS

	AMARR STRATFORD ST1000	AMARR STRATFORD ST2000	AMARR STRATFORD ST3000
Short	•	•	•
Long	•	•	•
Flush			•
Ribbed			•
<b>INSULATION<sup>1</sup></b>		Polystyrene	Polystyrene
<b>R-VALUE<sup>2</sup></b>		6.64	6.48
<b>DOOR THICKNESS</b>	2" (5.1cm)	2" (5.1cm)	1-3/8" (3.5cm)
<b>STEEL THICKNESS</b>	25 ga	25 ga	27/27 ga
<b>WINDOW GLASS OPTIONS</b>			
3/32" Single Strength	•	•	•
Insulated Glass			•
Obscure	•	•	•
<b>WIND LOAD<sup>3</sup> AVAILABLE</b>	•	•	•
<b>PAINT FINISH WARRANTY<sup>4</sup></b>	15 Years	25 Years	Lifetime
<b>WORKMANSHIP/HARDWARE WARRANTY<sup>4</sup></b>	1 Year	2 Years	3 Years

<sup>1</sup> Insulation has passed self-ignition, flamespread and smoke developed index fire testing.

<sup>2</sup> Calculated door section R-value is in accordance with DASMA TDS-163.

<sup>3</sup> It is your responsibility to make sure your garage door meets local building codes.

<sup>4</sup> For complete warranty details, visit amarr.com or contact your local Amarr dealer.

Entrematic reserves the right to change specifications and designs without notice and without incurring obligations.

Sectional door products from Entrematic may be the subject of one or more U.S. and/or foreign, issued and/or pending, design and/or utility patents.

Amarr and Stratford as words or logos are registered trademarks belonging to Entrematic Group AB or other companies controlled by the same organization. All rights reserved.

©Entrematic Group AB 2015. All rights reserved. Printed in USA Form #6330615/135M/GVS

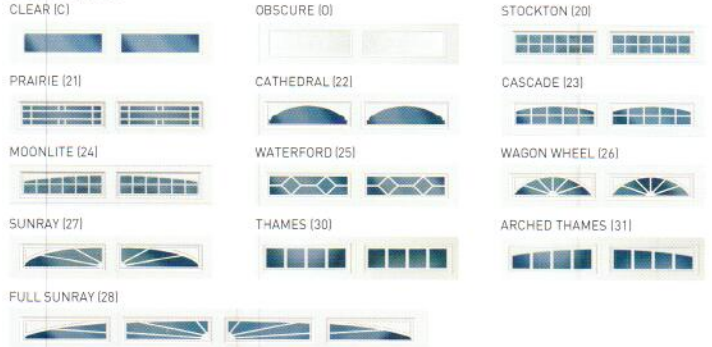
## DecraTrim Window Inserts

### SHORT PANEL



\*Available True White Only.

### LONG PANEL



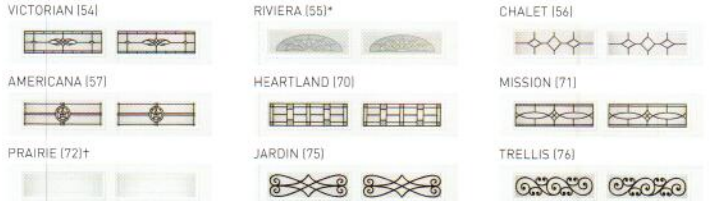
## DecraGlass™ Windows

Tempered obscure glass with baked-on ceramic designs.

### SHORT PANEL



### LONG PANEL



\* Clear glass with printed frost pattern.  
† Obscure glass with v-groove.

## Colors

Amarr steel doors are pre-painted; for custom colors, exterior latex paint must be used. Visit amarr.com for instructions on painting. Actual paint colors may vary from samples shown.



† Only available in Amarr Stratford ST3000.  
\* Price upcharge applies.



Entrematic  
165 Carriage Court  
Winston-Salem, NC 27105  
800.503.DOOR  
www.amarr.com



YOUR LOCAL AMARR DEALER: